

# CASE STUDY



---

## PLASTICS INDUSTRY – PET RESIN

## SOUTHEASTERN CONTAINER

---

**Southeastern Container has significantly increased profitability by importing and handing containerized PET resin directly using their A-Ward container unloader.**

---

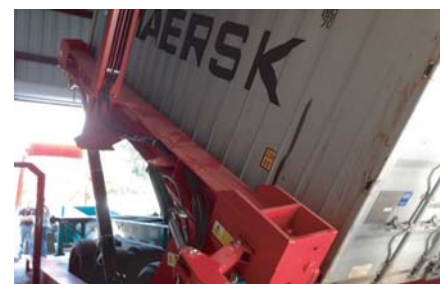
### Our challenge

Southeastern Container challenged A-Ward to supply a container unloader to enable the company to switch from purchasing PET domestically to importing PET in 20ft containers. Southeastern Container previously sourced PET locally, which was delivered via rail and trucks. This proved expensive as well as labor-intensive and time consuming to unload. This container unloader was required to receive full 20ft containers from standard North American tractor trailer units and then tilt the containers to an angle of 50 degrees to unload the PET resin.



### What we did

A-Ward supplied a slightly-customized 20ft Universal Frame container unloader to Southeastern Container. The customization included making a minor alteration to the container unloader so that the shipping container floor would remain at least 33inches (841mm) from the ground when tilted at 50 degrees (ensuring integration with their Caretex material distribution box). A-Ward also provided a number of accessories including hands free remote control, hydraulic door opening and closing arms and an electric power pack.



### Outcomes

Southeastern Container has significantly increased profitability by importing and handing containerized PET resin directly. By using a semi-customized A-Ward container unloader, Southeastern Container has been able to reduce trucking and transport costs (by importing directly) and reduce unloading time. Another major benefit is that Southeastern Container has reduced unloading labor from 2 people to 1 person by using a hands free remote control.

