

Multipurpose Granulator SERIES 1008

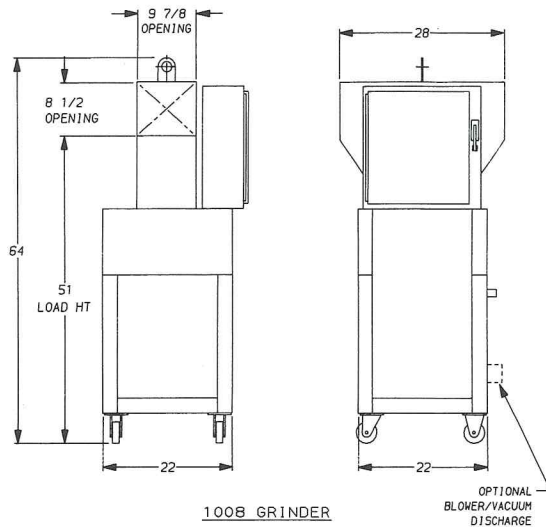


The 1008 Granulator series incorporates a cutting chamber design suitable for a wide range of applications including hot melt, sprues, runners, and small parts. Specific models are available for each type of granulating and all are offered with optional sound attenuation for granulating at under 80 dBA. Without this treatment, a still respectable 85 to 90 dBA range can be achieved. Sound treatment is easily retrofitted whenever desired. The chamber design uses economical flat blade knives in a skewed mount for point-contact cutting against the two bed knives. This, plus an open segmented rotor, yields cool operation and clean cutting with few fines, while contributing to the low overall operating sound levels. A unique aspect of this series is a bearing design configuration, originated by Foremost, which combines the compactness of flange mount style with the freedom from contamination of isolated pillow blocks. These "collar mounted" bearings have the added advantage of permanent lubrication, eliminating grease fittings and the problems associated with over or under lubrication. Periodic maintenance has been simplified and quickened. All knife adjustments are accomplished from the top of the chamber after tilting back the hopper. No dead spots or corners are found in the lower chamber or screen area, so dust and fines cannot accumulate, making clean out faster and more thorough. The screen assembly is held in place by two push rods for easy mounting and dismounting without loose hardware, yet is held firmly with positive seating and sealing. Commonly removed cabinet components clamp in place, and can be removed and replaced in moments, without tools.

FOREMOST®

GENERAL PURPOSE MODEL

The general purpose model is suitable for batches of sprues and runners, scrap parts, bottles and the like, with a 10" x 8" throat opening. It is extremely compact with a 24" x 33" floor space requirement and a 4' height to tray. Caster mounting is standard, as is bin discharge, with blower unloading a popular option. The conventional hopper is fully baffled to minimize flyback.



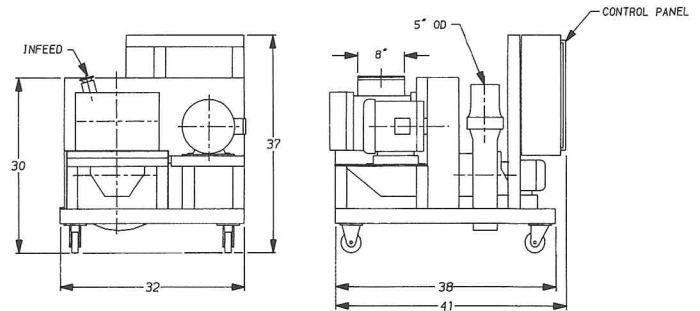
1008 GRINDER

OPTIONAL
BLOWER/VACUUM
DISCHARGE

HOT MELT MODEL

The Hot Melt Model is intended for processing hot thermoplastic directly from the extruder die without pre-cooling. Hot blow molding parisons, wire and cable hot melt, as well as compounding applications normally performed by a water stream pelletizer, can all be handled by this machine.

An integrally mounted, high CFM direct drive blower both cools the cutting chamber and conveys the granulate produced to a bin, blender or extruder hopper. This compact unit can be rolled easily from one extruder to another, as might be required in startup and purging operations. The standard model is equipped with an 8" x 1" inlet horn, but other sizes can be provided optionally, as dictated by the specific applications.



HMG 1008 GRINDER

Specifications:

- Rotor: Two-bladed skewed
- Throat Size: 10" x 8"
- Power: 7.5 HP (TEFC)
- Screen Size: 5/16" standard, others optional

Options:

- Blower or Vacuum unloading
- Special alloy knives for longer life
- Ammeter
- Automatic infeed hoppers and other special configurations
- Sound deadening construction
- Roller feeder
- Parts separators/conveyors

Specifications:

- Rotor: 4 Bladed
- Inlet Size: 8" x 1" (others optional)
- Power: 5 HP (TEFC)
- Screen Size: 1/4" diameter (standard), others optional
- Conveying/Cooling System: 3 HP (TEFC) direct drive blower with Model 500 cyclonic air separator.

* Specifications for reference only

* All dimensions are approximate, and in inches

AccuTrac Gravimetric Blender



FOREMOST®

FOREMOST MACHINE BUILDERS, INC.
23 SPIELMAN ROAD, P.O. BOX 10155, FAIRFIELD, NJ 07004
TELEPHONE: (973) 227-0700 FAX: (973) 227-7307